

4

3

2

1


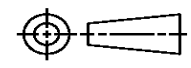
THIS DRAWING IS UNPUBLISHED. RELEASED FOR PUBLICATION
© COPYRIGHT ALL RIGHTS RESERVED.

| LOC | | DIST | | REVISIONS | | | |
|-----|-----|---------------|--|-----------|-----|------|--|
| P | LTR | DESCRIPTION | | DATE | DWN | APVD | |
| | C1 | ECR-14-010821 | | 18JUL2014 | GK | HMR | |
| | | | | | | | |
| | | | | | | | |

REPLACED BY OCEAN STYLE APPLICATOR PART NUMBER 2266308-1

FOR REPLACEMENT PARTS FOR APPLICATOR 1426565
REFER TO ADDITIONAL PAGE(S). SPARE PARTS KIT (IF LISTED)
WILL REMAIN AVAILABLE.

THE REPLACEMENT OCEAN STYLE APPLICATOR HAS THE
SAME TERMINATOR/PRESS INTERFACE AS APPLICATOR
1426565

| | | | | | | | | | |
|---|--|--|------------------|------------------|---|-----------------|--------------|------------|---------------|
| THIS DRAWING IS A CONTROLLED DOCUMENT. | | DWN | GOPALAKRISHNA HV | |  | TE Connectivity | | | |
| DIMENSIONS: | | CHK | RAGHAVENDRA | | | NAME | | | |
|  | | TOLERANCES UNLESS OTHERWISE SPECIFIED: | | APVD | SIDE FEED HD-I APPLICATOR | | | | |
| | | 0 PLC ± | 1 PLC ± | RAGHAVENDRA | | PRODUCT SPEC | | | |
| MATERIAL | | 2 PLC ± | 3 PLC ± | APPLICATION SPEC | | SIZE | CAGE CODE | DRAWING NO | RESTRICTED TO |
| FINISH | | 4 PLC ± | ANGLES ± | WEIGHT | | A3 | | ©- 1426565 | |
| | | | | CUSTOMER DRAWING | | SCALE | SHEET 1 OF 2 | REV C1 | |

THIS DRAWING IS UNPUBLISHED. RELEASED FOR PUBLICATION
 © COPYRIGHT BY TYCO ELECTRONICS CORPORATION. ALL INTERNATIONAL RIGHTS RESERVED.

| LOC | DISP | REV | DESCRIPTION | DATE | BY | APPD |
|-----|------|-----|---------------|--------|----|------|
| A | 66 | C | ECR-08-017979 | 7-2008 | MY | GB |

| PART NUMBER | REV | FIRST USED | TERMINATOR | FEED TYPE | DESCRIPTION |
|-------------|-----|------------|------------|----------------|--------------------|
| 1426565-1 | C | - | LEADMAKER | MECH POST FEED | CUTS CARRIER |
| 1426565-2 | C | - | BENCH | MECH PRE FEED | CUTS CARRIER |
| 1426565-6 | C | - | LEADMAKER | MECH POST FEED | CONTINUOUS CARRIER |
| 7-1426565-1 | C | - | LEADMAKER | MECH POST FEED | -1 AND SPARE PARTS |
| 7-1426565-2 | C | - | BENCH | MECH PRE FEED | -2 AND SPARE PARTS |
| 7-1426565-6 | C | - | LEADMAKER | MECH POST FEED | -6 AND SPARE PARTS |
| 7-1426565-7 | A | - | - | - | SPARE PARTS KIT |

| CRIMP DATA (AMP TERMINAL) | | | |
|---|----------------|------|---------------------------------------|
| TERMINAL NAME: CONTACT MOD IV CRIMP SNAP-IN | | | |
| CRIMP | SIZE | TYPE | RANGE |
| WIRE | 1.27 [.050 IN] | F | 24-20 AWG or 0.20-0.50mm ² |
| INSUL | 1.57 [.062 IN] | 0 | 1.20-1.50 [.047-.059 IN] |
| WIRE STRIP LENGTH | 4.00 [.157 IN] | | APPL INSTRUCTION 408-8322 |

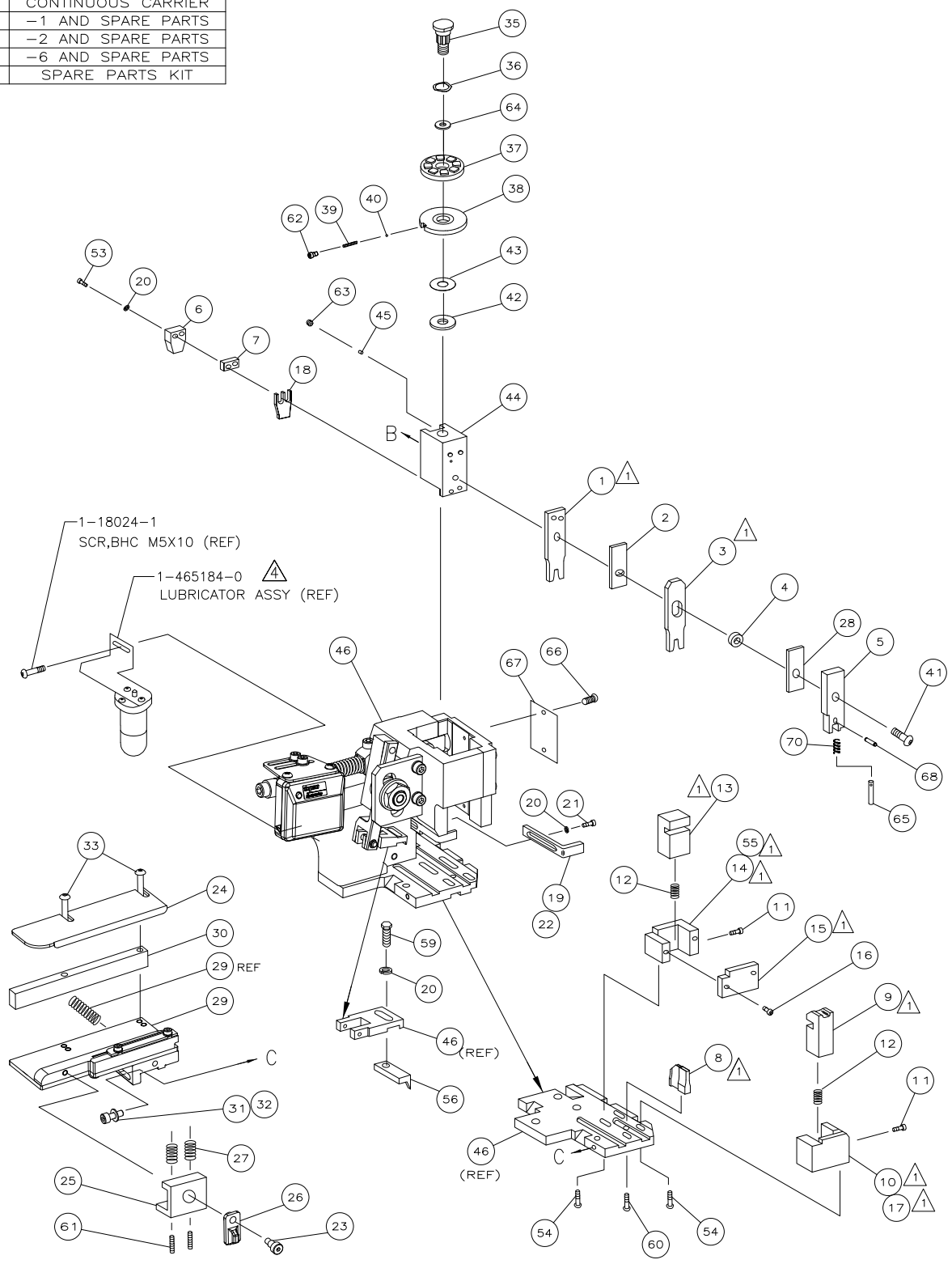
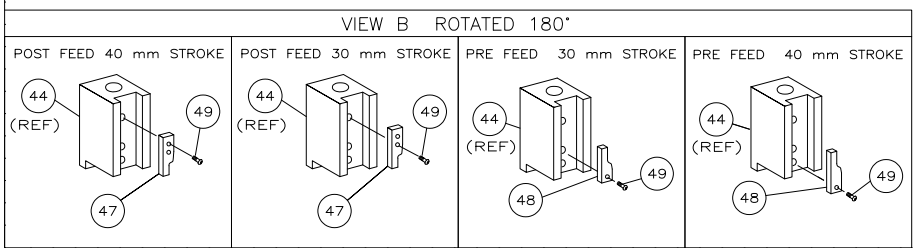
| | | | |
|-----------|--------------|--|----------------|
| TERMINAL | 114-18022 | | FEED |
| APPL SPEC | 114-25003(B) | | 5.38 [.212 IN] |

| TERMINALS APPLIED | | | |
|-------------------|------------|---|---|
| 85969 | 141702 | - | - |
| 86492 | 141760 | - | - |
| 87195 | 166309 | - | - |
| 87309 | 167300 | - | - |
| 87523 | 167301 (B) | - | - |
| 102680 | - | - | - |
| 141097 | - | - | - |
| 141600 | - | - | - |

| WIRE SIZE mm ² AWG | CRIMP HEIGHT | PIN PN & LENGTH [IN] |
|-------------------------------|----------------------------|----------------------|
| 20 AWG | 0.97 ±0.03 [.038 ±.001 IN] | 3-354779-1 [.3145] |
| 0.50mm ² | 0.96 ±0.03 [.038 ±.001 IN] | 3-354779-1 [.3145] |
| 0.35mm ² | 0.87 ±0.03 [.034 ±.001 IN] | 4-354779-0 [.3190] |
| 22 AWG | 0.85 ±0.03 [.033 ±.001 IN] | 4-354779-5 [.3215] |
| 0.25mm ² | 0.80 ±0.03 [.031 ±.001 IN] | 4-354779-9 [.3235] |
| 24 AWG or 0.20mm ² | 0.77 ±0.03 [.030 ±.001 IN] | 5-354779-2 [.3250] |

SET UP GAGE 458637-3 LAYOUT L2400

- 1. RECOMMENDED SPARE PARTS.
- 2. GREASE RAM, CAM, CAM FOLLOWER AND FEED ROD LIGHTLY.
- 3. LUBRICATE DAILY PER THE APPLICATOR INSTRUCTION SHEET SUPPLIED WITH THE APPLICATOR.
- 4. CERTAIN TERMINALS REQUIRE LUBRICATION. REFER TO THE APPLICATOR INSTRUCTION SHEET FOR MORE INFORMATION. FEED MAY REQUIRE ADJUSTMENT WHEN APPLYING DIFFERENT TERMINAL PART NUMBERS.
- 5. CRIMP DATA QUOTED IS SPECIFIC FOR GERMAN MARKET.



| QTY | REQD | PER ASSY | PART NO | DESCRIPTION | ITEM NO | | | |
|-----|------|----------|---------|-------------|---------|-------------|-------------------------------|----|
| - | 1 | 1 | 1 | 1 | 1 | 1426565 | PRINT, APPLICATOR LOG SHEET | 73 |
| - | 1 | 1 | 1 | 1 | 1 | 1338705-1 | DOCUMENTATION PACKAGE | 71 |
| - | 1 | 1 | 1 | 1 | 1 | 5-547505-2 | SPRING, COMPRESSION | 70 |
| - | 1 | 1 | 1 | 1 | 1 | 21028-2 | PIN, SLOTTED SPRING | 69 |
| - | 1 | 1 | 1 | 1 | 1 | 461264-1 | PLATE, IDENTIFICATION | 68 |
| - | 2 | 2 | 2 | 2 | 2 | 21017-2 | SCR,DRIVE(#2x.19)ID PLATE | 67 |
| - | 1 | 1 | 1 | 1 | 1 | 854769-4 | HOLDER, INSULATION | 66 |
| - | 1 | 1 | 1 | 1 | 1 | 986950-1 | WASHER, FLAT PRECISION | 65 |
| - | 1 | 1 | 1 | 1 | 1 | 3-18031-0 | SCR,SKT SET(M6X6)RAM | 64 |
| - | 1 | 1 | 1 | 1 | 1 | 18023-9 | SCR,SHC(M4X6)INS DISC | 63 |
| - | 2 | 2 | 2 | 2 | 2 | 2-18032-5 | SCR,SET(M5X20)DRAG | 62 |
| - | 1 | 1 | 1 | 1 | 1 | 18024-7 | SCR,BHC(M4X10)ANVIL | 61 |
| - | 1 | 1 | 1 | 1 | 1 | 5-18022-2 | SCR,HEX(M4X8)FEED FINGER | 60 |
| - | 1 | 1 | 1 | 1 | 1 | 1338685-1 | PAWL, FEED | 59 |
| - | 1 | - | - | - | - | 1338723-1 | HOLDER,SHEAR, REAR (NO CUT) | 58 |
| - | 4 | 4 | 4 | 4 | 4 | 18024-8 | SCR,BHC(M4x12)SHEAR HOLDER | 57 |
| - | 2 | 2 | 2 | 2 | 2 | 1-18023-3 | SCR,SHC(M4x16)TERM HLD DWN | 56 |
| - | 1 | 1 | 1 | 1 | 1 | 18024-3 | SCR,BHC(M3X10)CAM | 55 |
| - | - | - | - | - | - | 1338675-1 | CAM, PRE FEED 30 & 40 mm ST | 54 |
| - | 1 | - | - | - | - | 1338676-1 | CAM, POST FEED 30 & 40 mm ST | 53 |
| - | 1 | 1 | 1 | 1 | 1 | 1320999-3 | APPLICATOR BASIC SUBASSY | 52 |
| - | 1 | 1 | 1 | 1 | 1 | 690191-1 | PLUG, NYLON | 51 |
| - | 1 | 1 | 1 | 1 | 1 | 1338660-1 | RAM | 50 |
| - | 1 | 1 | 1 | 1 | 1 | 690125-1 | WASHER, LAMINATED | 49 |
| - | 1 | 1 | 1 | 1 | 1 | 690124-9 | WASHER, RAM | 48 |
| - | 1 | 1 | 1 | 1 | 1 | 2-18024-6 | SCR,BHC(M8X25)RAM | 47 |
| - | 1 | 1 | 1 | 1 | 1 | 23241-1 | BALL, STEEL | 46 |
| - | 1 | 1 | 1 | 1 | 1 | 2-22278-7 | SPRING, COMPRESSION | 45 |
| - | 1 | 1 | 1 | 1 | 1 | 1320922-3 | DISC, INSULATION | 44 |
| - | 1 | 1 | 1 | 1 | 1 | 354777-1 | WIRE DISC, PLASTIC | 43 |
| - | 1 | 1 | 1 | 1 | 1 | 22480-5 | WASHER, SPRING | 42 |
| - | 1 | 1 | 1 | 1 | 1 | 690212-1 | POST, RAM | 41 |
| - | 2 | 2 | 2 | 2 | 2 | 1-18024-0 | SCR,BHC(M4X20)STRIP GUIDE | 40 |
| - | 1 | 1 | 1 | 1 | 1 | 18027-2 | WASHER, FLAT(M4) | 39 |
| - | 1 | 1 | 1 | 1 | 1 | 1-18023-2 | SCR,SKT CAP(M4X12)MOUNT BLOCK | 38 |
| - | 1 | 1 | 1 | 1 | 1 | 1320908-9 | SPACER, STRIP GUIDE | 37 |
| - | 1 | 1 | 1 | 1 | 1 | 1633073-1 | STRIP GUIDE PLATE ASSY | 36 |
| - | 1 | 1 | 1 | 1 | 1 | 1-455888-0 | SPACER, FRONT SHEAR DEP | 35 |
| - | 2 | 2 | 2 | 2 | 2 | 1-22284-0 | SPRING, DRAG | 34 |
| - | 1 | 1 | 1 | 1 | 1 | 356835-1 | LEVER, DRAG RELEASE | 33 |
| - | 1 | 1 | 1 | 1 | 1 | 679754-1 | DRAG, TERMINAL | 32 |
| - | 1 | 1 | 1 | 1 | 1 | 1320928-1 | PLATE, STRIP GUIDE | 31 |
| - | 1 | 1 | 1 | 1 | 1 | 980371-4 | SCR,SHC SHLD | 30 |
| - | 1 | - | - | - | - | 690472-2 | STRIPPER | 29 |
| - | 1 | 1 | 1 | 1 | 1 | 1-18023-1 | SCR,SHC(M4X10)STRIPPER | 28 |
| - | 4 | 4 | 4 | 4 | 4 | 18025-2 | WASHER,LOCK(M4)STRIPPER | 27 |
| - | - | - | - | - | - | 690472-1 | STRIPPER | 26 |
| - | 1 | 1 | 1 | 1 | 1 | 690518-1 | HOLDER, TERMINAL | 25 |
| - | 1 | - | - | - | - | 1338684-1 | HOLDER, SHEAR, FRONT (NO-CUT) | 24 |
| - | 2 | 2 | 2 | 2 | 2 | 18023-2 | SCR,SHC(M3X6)REAR SHEAR PL | 23 |
| - | 1 | 1 | 1 | 1 | 1 | 1-690691-1 | PLATE, SHEAR (REAR) | 22 |
| - | - | - | - | - | - | 1320920-1 | HOLDER, SHEAR, REAR (CUT) | 21 |
| - | 1 | 1 | 1 | 1 | 1 | 690463-1 | SHEAR, FLOAT (REAR) | 20 |
| - | 2 | 2 | 2 | 2 | 2 | 3-22280-3 | SPRING, SHEAR | 19 |
| - | 2 | 2 | 2 | 2 | 2 | 356885-4 | STOP, SHEAR | 18 |
| - | - | - | - | - | - | 1320921-1 | HOLDER, SHEAR, FRONT (CUT) | 17 |
| - | 1 | 1 | 1 | 1 | 1 | 462006-1 | SHEAR, FLOAT (FRONT) | 16 |
| 1 | 2 | 2 | 2 | 1 | 1 | 7-1333225-4 | ANVIL | 15 |
| - | 1 | 1 | 1 | 1 | 1 | 4-240641-1 | SPACER, DEPRESSOR (REAR) | 14 |
| - | 1 | 1 | 1 | 1 | 1 | 690468-1 | DEPRESSOR, SHEAR (REAR) | 13 |
| - | 1 | 1 | 1 | 1 | 1 | 854772-1 | DEPRESSOR, SHEAR (FRONT) | 12 |
| - | 1 | 1 | 1 | 1 | 1 | 238011-6 | SPACER, BLOCK CRIMPER | 11 |
| 1 | 1 | 2 | 2 | 2 | 1 | 4-456135-1 | CRIMPER, INSULATION | 10 |
| - | 1 | 1 | 1 | 1 | 1 | 455888-2 | SPACER, CRIMPER | 9 |
| 1 | 1 | 2 | 2 | 2 | 1 | 7-568176-0 | CRIMPER, WIRE | 8 |

THIS DRAWING IS A CONTROLLED DOCUMENT.

APPROVED: M. CLIFFORD
 DATE: 15JUL05

APPROVED: F. BACKHURST
 DATE: 15JUL05

PRODUCT SPEC: SIDE FEED HD-I APPLICATOR

SCALE: A1
 SHEET 1 OF 1

CUSTOMER DRAWING